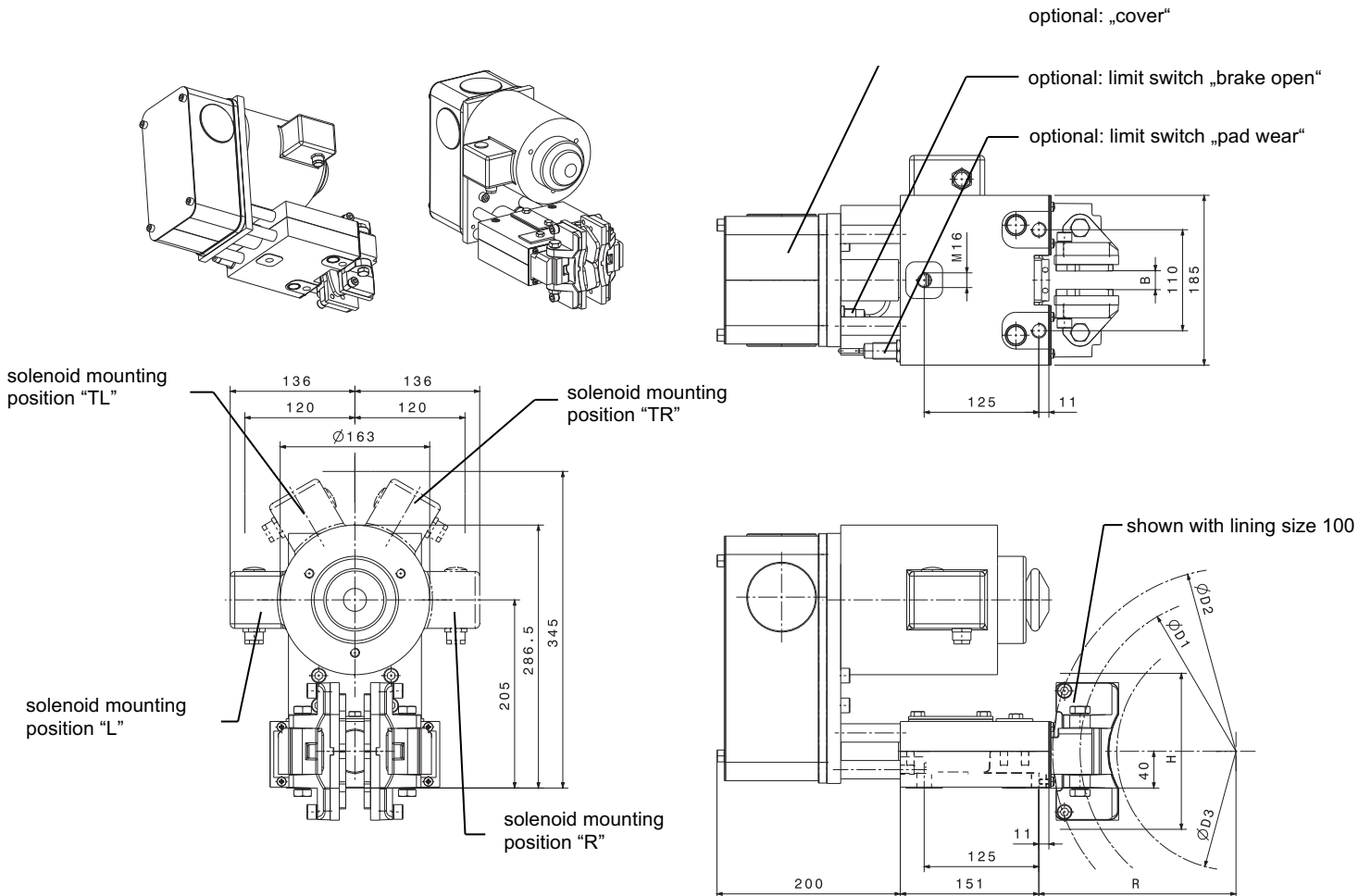
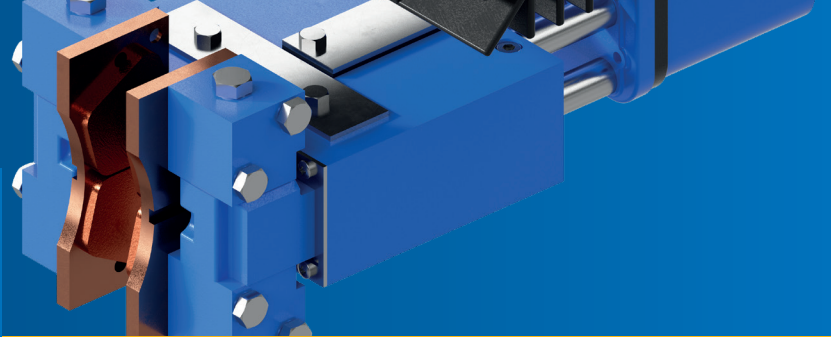


COMPACT CALIPER BRAKE

CB8-M, solenoid released

M 1501 346 E-EN-2015-05



OPTIONS

options: protective cover, manual release, limit switches „brake open“ & „pad wear“
solenoid mounting position selectable between “L”, “TL”, “TR” or “R”

B = disc width in mm, standard = 20 mm, optional: 12,7; 16; 25; 30

Ø D2 = outer disc diameter in mm

linings: = size 50 standard: organic (suitable for max.circumferential speed $v_{max} = 35m/sec.$)
= size 50 optional: Sinter
= size 100 standard: Sinter (for discs $D2 \geq \varnothing 250$)

weight = 22 kg

(H* for B > 25 mm)

dimensions depending on selected lining size

CB8-M	ØD1	ØD3	R	H (H*)	
3-50 with lining size 50	ØD2 - 46	ØD2 - 110	D2 / 2 + 19,5	110 (130)	
4-100 with lining size 100	ØD2 - 60	ØD2 - 140	D2 / 2 + 15	152 (170)	
braking torque in Nm ($\mu = 0,4$) on disc-Ø D2, adjustable from / to					
	Ø 200	Ø 250	Ø 315	Ø 400	Ø 500
CB8-M-50	80-300	110-400	140-530	180-700	n.a.
CB8-M-100	n.a.	350-680	460-910	620-1220	800-1580

Caliper brakes CB8-M are fitted with a DC solenoid. Version CB8-M4-100 is connected via external „switch over control unit“ as per data sheet M 1501 280 E.